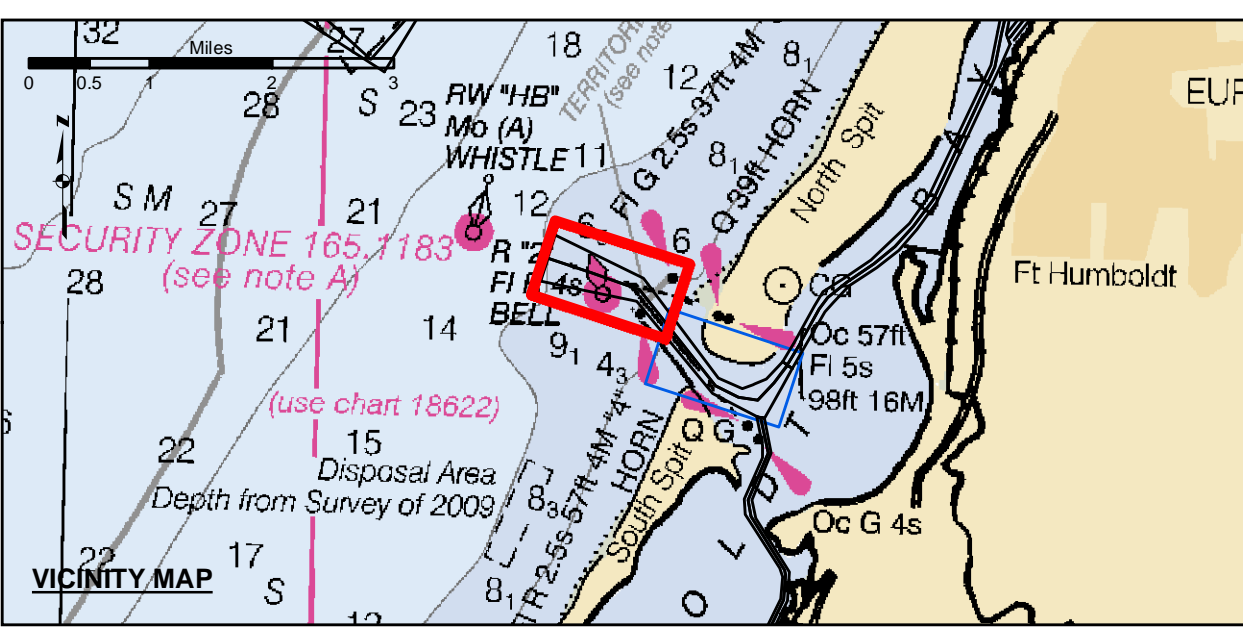


PRELIMINARY ISSUE
THIS PLAN ISSUED FOR
ADVANCE INFORMATION ONLY

NAD 83 CENTERLINE ANGLE POINTS HUMBOLDT BAY (BAR & ENTRANCE)					
Δ PT	X	Y	Δ PT	X	Y
C-1	5936273.49	2172157.43	24	5959081.79	2187578.43
C-2	5938147.59	2171508.43	25	5958421.69	2187381.23
C-3	5940265.09	2170773.43	26	5958007.99	2186903.83
C-4	5943553.39	2166602.43	27	5956425.99	2183993.63
C-5	5944545.29	2166122.43	28	5956165.59	2181942.63
C-6	5945752.59	2165911.73	29	5955634.69	2181424.83
C-7	5946085.69	2165728.23	30	5955696.89	2180353.43
C-8	5946886.99	2165508.33	31	5955163.09	2174504.63
C-9	5947166.09	2165359.43	32	5954200.39	2173413.53
C-10	5948049.99	2165917.43	33	5954156.79	2172459.53
C-11	5948433.89	2170455.43	34	5953525.69	2171724.13
C-12	5949233.79	2171119.43	35	5949343.09	2170952.03
C-13	5950417.39	2171891.43	36	5948674.79	2170232.13
C-14	5951329.29	2172556.43	37	5948301.49	2169794.33
C-15	5952138.39	2173530.43	38	5947385.59	2169234.23
C-16	5952999.89	2174705.43	39	5946907.49	2168731.23
C-17	5953711.89	2180611.43	40	5946431.39	2168537.23
C-18	5956236.79	2183159.43	41	5945672.89	2165192.43
C-19	5957823.09	2186975.43	42	5945354.09	2162524.63
C-20	5958152.59	2187513.43	43	5944363.09	2165776.33
C-21	5958681.79	2187878.43	44	5943441.39	2162611.63
C-22	5959281.79	2188078.43	45	5942125.19	2172287.83
C-23	5959581.79	2189078.43	46	5937908.79	2170746.43
			47	5935950.29	2171151.43



- Federal Navigation Channel
- Shoaling Area
- Placement Area
- Anchorage Area
- Wreck Area
- Submerged Wreck
- Zone_I_Angle_Points
- Beacon, General
- Obstruction Point
- Navigation Buoy
- Navigation Buoy
- Shoalest Sounding*
- Contours -48
- Contours -47
- Contours -46
- Contours -45
- Contours -44

NOTES:
DRAWINGS NOT TO BE USED AS NAVIGATION. ONLY CHANNEL CONDITION AT DATE OF SURVEY. THE LOCATION OF ALL NAVIGATION AIDS ARE BASED ON INFORMATION PROVIDED BY THE U.S. COAST GUARD. BUOY LOCATION REPRESENT THE POSITION OF THE SINKER ONLY.
SURVEYED BY THE CORPS OF ENGINEERS.
SOUNDINGS WERE TAKEN BY FATHOMETER AND ARE SHOWN TO THE NEAREST TENTHS OF A FOOT.
SOUNDINGS ARE BASED ON THE DATUM OF MEAN LOWER LOW WATER AT THE LOCALITY.
PLANE GRID AND COORDINATES ARE BASED ON THE STATE OF CALIFORNIA COORDINATE SYSTEM, LAMBERT CONFORMAL PROJECTION, ZONE 1 NAD 83, CALIFORNIA, AS DESCRIBED IN SPECIAL PUBLICATION NO. 235, PUBLISHED BY THE NATIONAL OCEAN SURVEY.
PROJECT DEPTHS ARE AS FOLLOWS:
BAR & ENTRANCE CHANNEL = 48 FEET
NORTH BAY, SAMOATO MILE 5.0 & = 38 FEET
EUREKA CHANNEL, FIELDS LANDING CHANNEL & MILE 5.0 TO 'N' STREET = 26 FEET

1:00 INDICATES THE NUMBER AND BEGINNING OF A LINE OF SOUNDINGS.
SOUNDINGS ARE BASED ON TIDE GAUGES REFERENCED TO U.S.C. & G.S.
Vertical and Horizontal Control:
NOAA Station: 941 8767 - North Spit, CA
Benchmark:
NO 11 1340 (PID: LV0359)
MLW Elev: 4.251m
Title:
RTK GPS, using GEOID12a and VDATUM
RTK elevations calibrated at 10.0ft nail at Coast Guard Station Humboldt Bay
Position:
RTK Positions

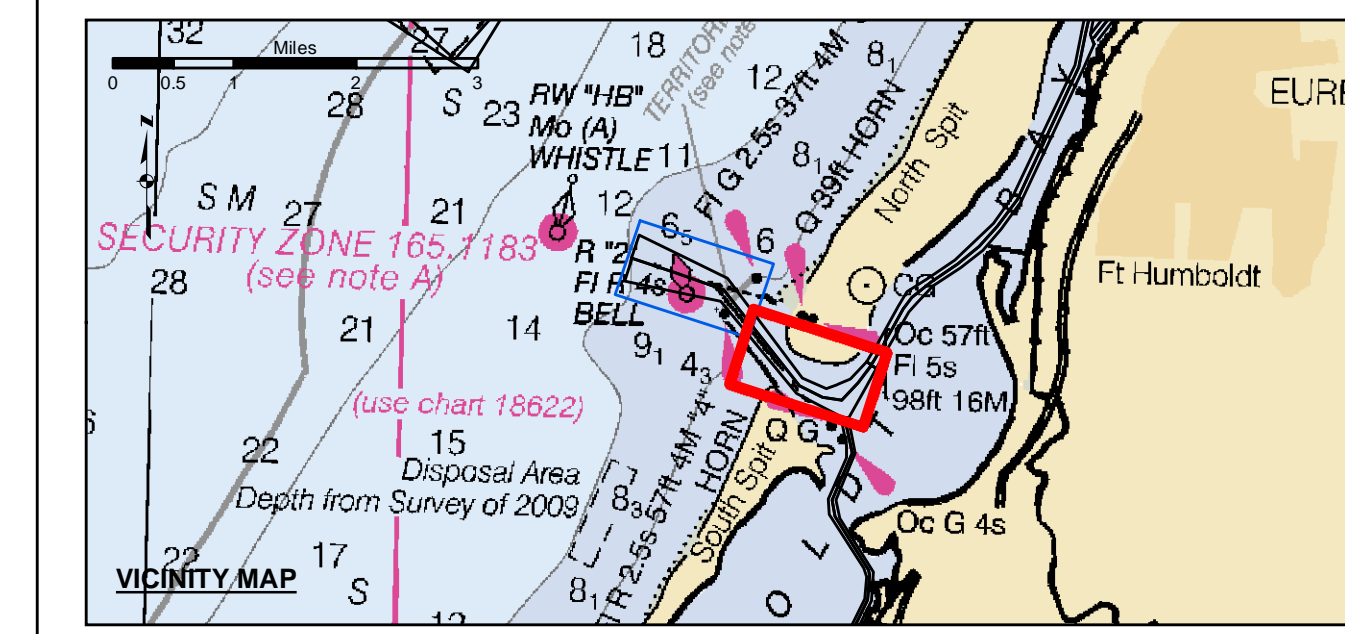
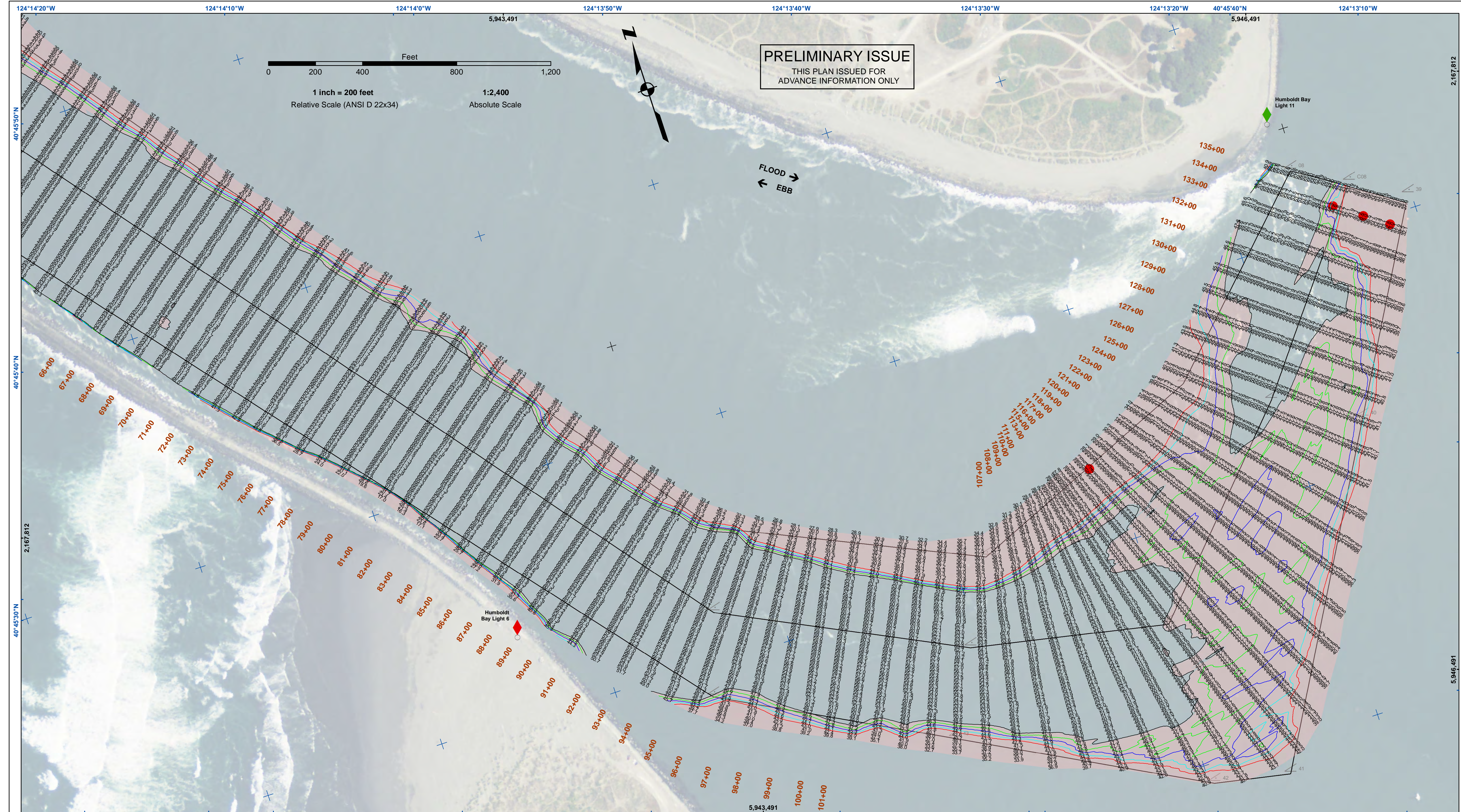


DISCLAIMER
The United States Government furnishes this information as a public service. It is not intended to be used for any purpose other than that for which it was prepared. The United States Government makes no warranty, expressed or implied, concerning the accuracy, completeness, or reliability of the information. The user is responsible for the results of any use of the information. The user shall indemnify and hold the United States Government harmless from any and all claims, damages, and expenses, including reasonable attorneys' fees, that may be incurred by the United States Government as a result of any use of the information. The user shall not be held liable for any loss or damage, including consequential, special, or punitive damages, arising from any use of the information. The user shall not be held liable for any loss or damage, including consequential, special, or punitive damages, arising from any use of the information. The user shall not be held liable for any loss or damage, including consequential, special, or punitive damages, arising from any use of the information.

Prepared Under the Direction of:	KEVIN P. ARNETT	Chart Date:	Nov 30, 2021
Surveyed By:	LT COLONEL C.E. DISTRICT ENGINEER	Designed by:	PDT
Plotted By:	Hydro Survey Team Leader	Checked By:	PDT
Recommended:	Chief, Hydro Survey Section	Drawn by:	PDT
Approved:	Chief, Construction Branch		

CALIFORNIA
HUMBOLDT COUNTY
HUMBOLDT BAY
BAR & ENTRANCE CHANNEL
POST-DREDGE SURVEY
29 NOVEMBER 2021

Sheet Number 1 of 2



Federal Navigation Channel	Beacon, General	Contours
Shoaling Area	Obstruction Point	-48
Placement Area	Navigation Buoy	-47
Anchorage Area	Navigation Buoy	-46
Wreck Area	Shoalest Sounding*	-45
Submerged Wreck		-44
Zone_I_Angle_Points		

NOTES:
 DRAWINGS NOT TO BE USED AS NAVIGATION. ONLY CHANNEL CONDITION AT DATE OF SURVEY. THE LOCATION OF ALL NAVIGATION AIDS ARE BASED ON INFORMATION PROVIDED BY THE U.S. COAST GUARD. BUOY LOCATION REPRESENT THE POSITION OF THE SINKER ONLY.

SURVEYED BY THE CORPS OF ENGINEERS.

SOUNDINGS WERE TAKEN BY FATHOMETER AND ARE SHOWN TO THE NEAREST TENTHS OF A FOOT.

SOUNDINGS ARE BASED ON THE DATUM OF MEAN LOWER LOW WATER AT THE LOCALITY.

PLANE GRID AND COORDINATES ARE BASED ON THE STATE OF CALIFORNIA COORDINATE SYSTEM, LAMBERT CONFORMAL PROJECTION, ZONE 1 NAD 83, CALIFORNIA, AS DESCRIBED IN SPECIAL PUBLICATION NO. 235, PUBLISHED BY THE NATIONAL OCEAN SURVEY.

PROJECT DEPTHS ARE AS FOLLOWS:
 BAR & ENTRANCE CHANNEL = 48 FEET
 NORTH BAY, SAMO TO MILE 5.0 & = 38 FEET
 EUREKA CHANNEL, FIELDS LANDING CHANNEL & MILE 5.0 TO "N" STREET = 26 FEET

1:00 INDICATES THE NUMBER AND BEGINNING OF A LINE OF SOUNDINGS.

SOUNDINGS ARE BASED ON TIDE GAUGES REFERENCED TO U.S.C. & G.S.

Vertical and Horizontal Control:
 NOAA Station: 941 8767 - North Spit, CA
 Benchmark:
 NO 11 1340 (PID: LV0359)
 MLW Elev: 4.251m

Tides:
 RTK GPS, using GEOID12a and VDATUM
 RTK elevations calibrated at 10.0ft nail at Coast Guard Station Humboldt Bay

Position:
 RTK Positions

US Army Corps of Engineers
 San Francisco District
 450 Golden Gate Ave
 San Francisco, CA 94102

DISCLAIMER
 The United States Government furnishes this information as a public service. It is not intended to be used for any purpose other than that for which it was prepared. The United States Government makes no warranty, expressed or implied, concerning the accuracy, completeness, or timeliness of the information. The user is responsible for the results of any application of the information. The United States Government shall not be liable for any damages, including consequential damages, arising from the use of this information. These data belong to the Government. Therefore the recipient may not transfer these data to others without also transferring this disclaimer.

Prepared Under the Direction of	Chart Date
LT COLONEL C.E. DISTRICT ENGINEER	Nov 30, 2021
Submittal	Plotted By
Hydro Survey Team Leader	PDT
Recommended	Checked By
Chief, Hydro Survey Section	PDT
Approved	Chief, Construction Branch
Drawn by	PDT

CALIFORNIA
 HUMBOLDT COUNTY
**HUMBOLDT BAY
 BAR & ENTRANCE CHANNEL
 POST-DREDGE SURVEY**
 29 NOVEMBER 2021

**Sheet
 Number
 2 of 2**